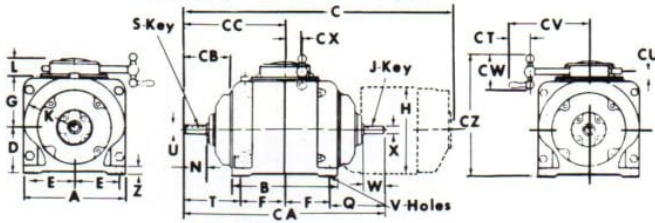
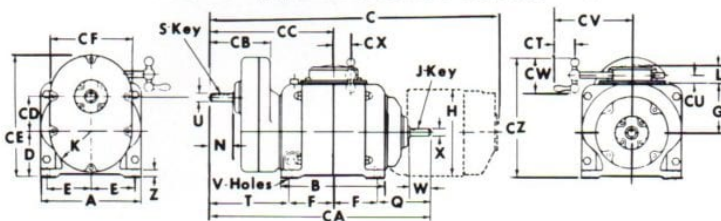


# Series 150 Dimensions

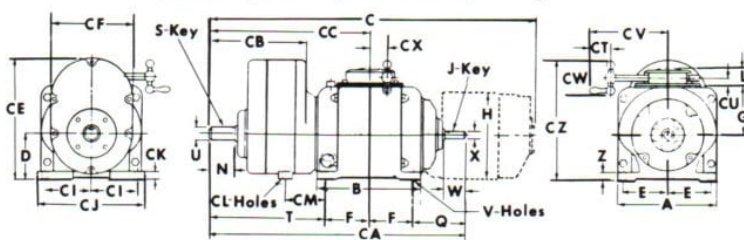
STANDARD OUTPUT — Figure I



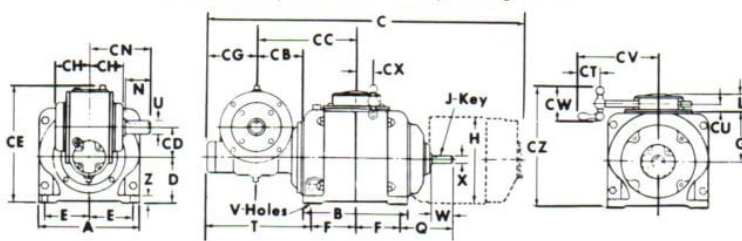
R and S OUTPUT (Spur Reduction and Step-Up) — II



T OUTPUT (Double Spur Reduction) — Figure III



W OUTPUT (Worm Reduction) — Figure IV

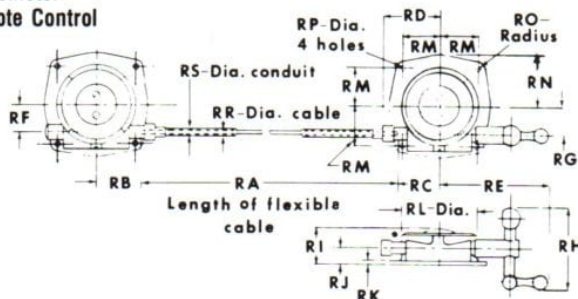


	standard	R & S	T	W
Figure	I	II	III	IV
A	8 3/4	8 3/4	8 3/4	8 3/4
B	9 5/32	9 5/32	9 5/32	9 5/32
C	*23 17/16	*25 17/32	*28 3/8	*27 21/32
D	4	4	4	4
E	3 7/8	3 7/8	3 7/8	3 7/8
F	3 7/8	3 7/8	3 7/8	3 7/8
G	4 3/8	4 3/8	4 3/8	4 3/8
H	*6 3/8	*6 3/8	*6 3/8	*6 3/8
J-Key	3/16 x 3/16	3/16 x 3/16	3/16 x 3/16	3/16 x 3/16
K	4 3/8	3 9/16	3 9/16	3 1/8
L	1 1/2	1 1/2	1 1/2	1 1/2
N	2	2	2 1/4	2 1/4
Q	4 23/32	4 23/32	4 23/32	4 23/32
S-Key	3/16 x 3/16	3/16 x 3/16	1/4 x 1/4	1/4 x 1/4
T	4 7/8	6 31/32	10 1/16	9 9/32
U	.7500	.7500	1.1250	1.1250
	.7495	.7495	1.1245	1.1245
V-Holes	17/32	17/32	17/32	17/32
W	1 7/8	1 7/8	1 7/8	1 7/8
X	.6250	.6250	.6250	.6250
	.6245	.6245	.6245	.6245
Z	5/8	5/8	5/8	5/8
CA	17 11/32	19 1/16	22 17/32	21 1/16
CB	4 3/64	5 9/32	8 3/8	4
CC	8 3/4	10 27/32	13 15/16	8 23/32
CD		3.031		2.625
CE		10 19/32	10 19/32	10 1/4
CF		7 1/8	7 1/8	
CG				4 1/4
CH				2 31/32
CI			4 1/16	
CJ			9 3/8	
CK			5/8	
CL-Holes			9/16	
CM			4 17/32	
CN				5 1/32
CT	1 13/32	1 13/32	1 13/32	1 13/32
CU	2 1/32	2 1/32	2 1/32	2 1/32
CV	6 1 1/32	6 1 1/32	6 1 1/32	6 1 1/32
CW	3 1/16	3 1/16	3 1/16	3 1/16
CX	1 1/2	1 1/2	1 1/2	1 1/2
CZ	10 19/32	10 19/32	10 19/32	10 19/32
Approx. Wt. Less Motor				
Motor	75	90	130	110
Complete With Motor	125	140	180	170

\*These Dimensions are approximate and are dependent on motor type and manufacturer.

Dimensions subject to change. Ask for certified drawings for installation.

Micrometer Remote Control



Series	150	300	Series	150	300
RA	*	*	RJ	2 1/32	2 1/32
RB	1 17/16	1 5/8	RK	3/16	3/16
RC	1 7/16	1 5/8	RL	4 3/16	4 3/16
RD	2 1 1/16	2 1 1/16	RM	2.219	2.219
RE	4 7/16	4 7/16	RN	2 29/32	2 29/32
RF	1 1/2	2 9/64	RO	5/16	5/16
RG	1 1/2	1 1/2	RP	1 1/32	1 1/32
RH	3 1/16	3 1/16	RR	.250	.250
RI	1 1/2	1 1/2	RS	.445	.445

\*Standard cable lengths available are 12", 18", 24", 36", 48", 60", and 72". For control beyond 72" consult factory. Minimum operating radius of cable 4".